

## COMBINED PRE-TREATMENT “PACKAGED HEADWORKS”

### GENERAL DESCRIPTION

These packaged plants offer complete preliminary treatment to Raw Sewage or Sewage from Septic Tanks. The plants are fully automatic and incorporate their control for complete independence from other works. They combine the following operations:

- Fine Screening
- Screening Washing & Compaction
- Aerated Grit Separation
- Grit Removal -Washing & Dewatering
- Oil & Grease Separation
- Automatic Grease Removal (Optional)



The packaged plants “TOP 2 & 3” are the ideal solution for the Head Works of any Sewage Treatment Installations since the largest single TOP plant can treat **up to 200 l/s of raw sewage**, while the smallest unit will be capable of 15 l/s. The raw sewage enters the plant at end through a gravity feed connection or through a special coupled connection with an automatic valve for use with the discharge pipe of a „tanker truck” (for septic sewage). The raw sewage is then fine screened (1 – 10 mm) by a screw screen and then is further washed (optional), dewatered and compacted by the screw compactor incorporated in line of the screen. The screenings are then discharged into a standard rubbish bin or can be bagged if required.

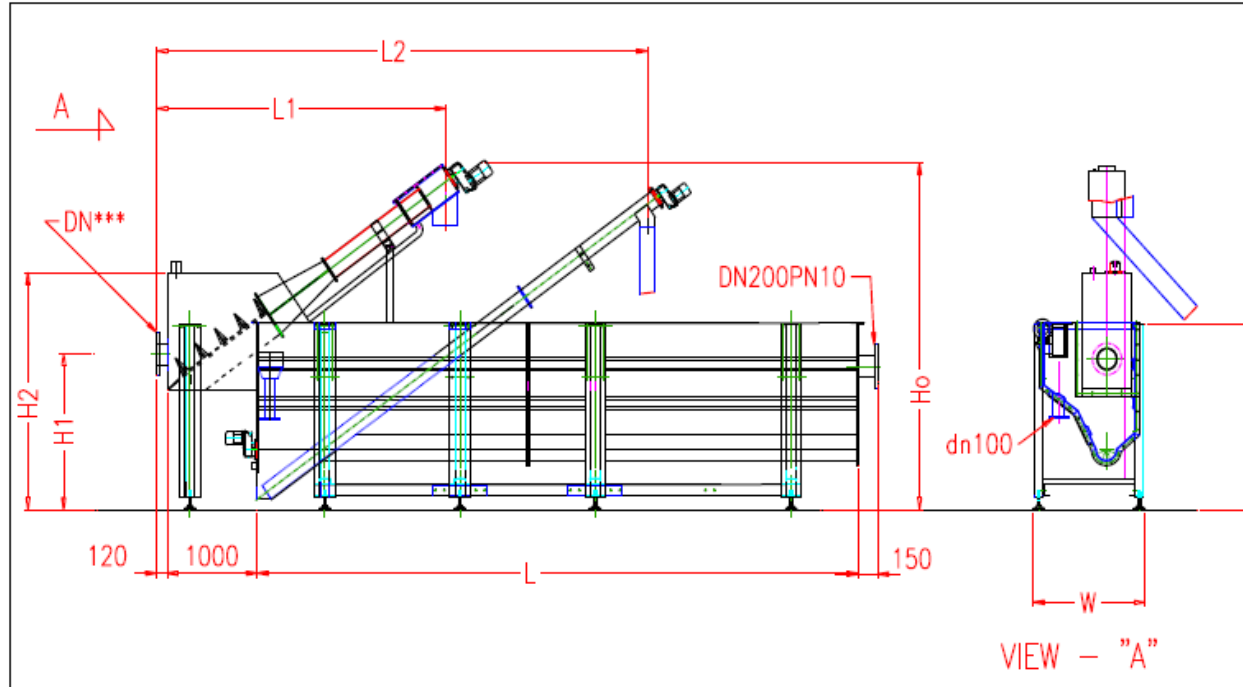
The screened sewage passes through the aerated channel, which is designed to **trap 90% of all grit** and inert material of **200 microns** size. The trapped grit is removed from the tank via two



shaftless screw conveyors, a horizontal and an inclined one. The grit before it is finally discharged through the inclined screw conveyor is dewatered and can be washed as an option for the removal of organic matter. With the option of washing systems (screening and grit) the odour of the wasted material is eliminated significantly. The rotational movement generated by the diffused air in the chamber assists the oil & grease to float at the surface and one side of the tank. The floating fat is then skimmed off the surface through a paddle scraper. The fat is finally discharged via a hopper either in a suitable container or is fed into a pump for further transfer.

## BENEFITS

- COMPLETE PRE-TREATMENT OF RAW SEWAGE
- ELIMINATES CIVIL WORKS
- QUICK & EASY INSTALLATION
- ODOURLESS OPERATION (Fully Covered)
- SMALL FOOT PLAN
- STAINLESS STEEL CONSTRUCTION (SS-304, SS-316)



TECHNICAL CHARACTERISTICS	MINYTOP	TOP3-15	TOP3-30	TOP3-60	TOP3-100	TOP3-200
CAPACITY (l/s)	4 - 6	15	30	60	100	200
LENGTH OF TANK – L (mm)	4.660	3.000	6.000	6.000	12.000	10.500
LENGTH - L1 (mm)	-	2.750	3.185	4.320	4.320	3.915
LENGTH - L2 (mm)	-	3.950	5.915	7.180	7.180	6.45
OVERALL HEIGHT – Ho (mm)	2.885	3.250	3.430	4.610	4.610	4.665
HEIGHT – H1 (mm)	-	1.400	1.600	2.040	2.040	2.045
HEIGHT– H2 (mm)	-	2.310	2.540	2.960	2.960	3.250
WIDTH –W (mm)	700	1.250	1.250	1.670	1.670	2.230
INSTALLED POWER* (KW)	0,75	1,30	1,30	1,42	1,84	2,4